

Tree of Lights

Celebrate the life of a loved one this Christmas.

Starts on 08/12/2008

Start time 19:30

Ends on 10/12/2008

End time 20:30

Category Service

Location St Helens & Knowsley

Celebrate a life at Christmas

The 'Tree of Lights' campaign is a celebration of life. For each donation a light will shine on the Hospice Tree to remember and celebrate the life of your chosen loved one.

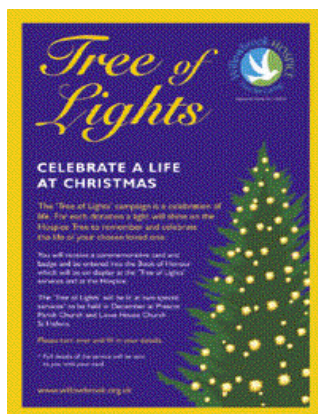
You will receive a commemorative card and badge and be entered into the Book of Honour which will be on display at the 'Tree of Lights' services and at the Hospice.

The 'Tree of Lights' will be lit at two special services, one to be held on Monday 8th December at Prescot Parish Church and the second on Wednesday 10th December at St Marys Lowe House Church.

Refreshments are available from 6pm in the Church Hall. The Tree of Lights service starts at 7.30 pm.

This campaign begins in September and runs until December.

[Click here to download the Tree of Lights form.](#)



[Download a 'Tree of Lights' form to remember your loved one.](#)



The form is titled 'Santa's Mailbox' and includes the Willowbrook Hospice logo. It asks 'Have you got a special child in your life?' and 'Want to tell them just how special?'. A short paragraph explains: 'Santa is ready and waiting to write a letter to your little one to tell them just how special they are. Tell your child's true light up when they receive their very own letter from the man himself. We will deliver Santa's letter in a special box going to meet with their special letter carrier. Simply complete this form and return it to the Help Helpline. Santa will personally sign all letters for delivery.' The form has fields for: Donator's Name, Donor's Address, Child's Name, Child's Address, Donor's Name, Donor's Address, Child's Name, Child's Age, and Contact Number. There are checkboxes for 'Males' and 'Females'. At the bottom, it says 'PLEASE RETURN THIS FORM TO: Willowbrook Hospice Fundraising Office, 143A Cloughan Street, St Helens, Merseyside, WA12 1JZ'. There is also a section for 'OFFICE USE ONLY' with checkboxes for 'Child', 'Santa's Box', and 'Donor's Name'.

[Have you got a special child that you would like to receive a letter from the 'Man himself'](#)

